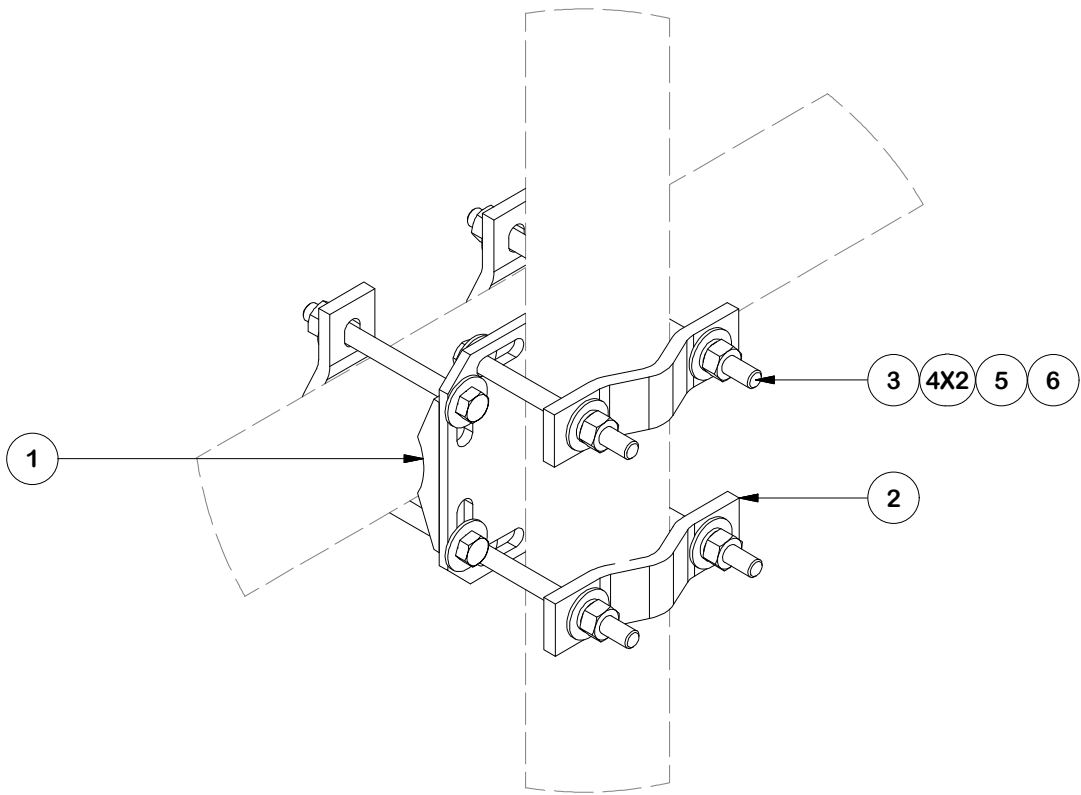


PARTS LIST						
ITEM	QTY	PART NO.	PART DESCRIPTION	LENGTH	UNIT WT.	NET WT.
1	2	X-SCX4-FR	4-1/2" FORTRESS CROSSOVER PLATE		8.10	16.21
2	8	DCP	1/2" THICK, 5-3/4" CNTER TO CENTER CLAMP HALF	8 1/8 in	2.36	18.90
3	16	G5807	5/8" x 7" HDG HEX BOLT GR5 FULL THREAD	7 in	0.70	11.28
4	32	G58FW	5/8" HDG USS FLATWASHER	1/8 in	0.07	2.25
5	16	G58LW	5/8" HDG LOCKWASHER		0.03	0.42
6	16	G58NUT	5/8" HDG HEAVY 2H HEX NUT		0.13	2.08
					TOTAL WT. #	51.13



DETAIL A

TOLERANCE NOTES

TOLERANCES ON DIMENSIONS, UNLESS OTHERWISE NOTED ARE:  
SAWED, SHEARED AND GAS CUT EDGES (± 0.030")  
DRILLED AND GAS CUT HOLES (± 0.030") - NO CONING OF HOLES  
LASER CUT EDGES AND HOLES (± 0.010") - NO CONING OF HOLES  
BENDS AND ANGLES ARE ± 1/2 DEGREE  
ALL OTHER MACHINING (± 0.030")  
ALL OTHER ASSEMBLY (± 0.060")

PROPRIETARY NOTE:  
THE DATA AND TECHNIQUES CONTAINED IN THIS DRAWING ARE PROPRIETARY INFORMATION OF VALMONT INDUSTRIES AND CONSIDERED A TRADE SECRET. ANY USE OR DISCLOSURE WITHOUT THE CONSENT OF VALMONT INDUSTRIES IS STRICTLY PROHIBITED.

DESCRIPTION  
  
FACE ASSEMBLY PIPE MOUNT KIT

CPD NO.		DRAWN BY	ENG. APPROVAL
		CMFL 12/21/2021	
CLASS	SUB	DRAWING USAGE	CHECKED BY
87	02	CUSTOMER	

SITE PRO 1

A valmont COMPANY

Engineering Support Team:  
1-888-753-7446

Locations:  
New York, NY  
Atlanta, GA  
Los Angeles, CA  
Plymouth, IN  
Salem, OR  
Dallas, TX  
Tampa, FL

PART NO.	FACE-PM
DWG. NO.	FACE-PM